

City priorities **1** Children and young people get the best possible start in life

# Youth & Holiday Offer in the city

5 October 2022

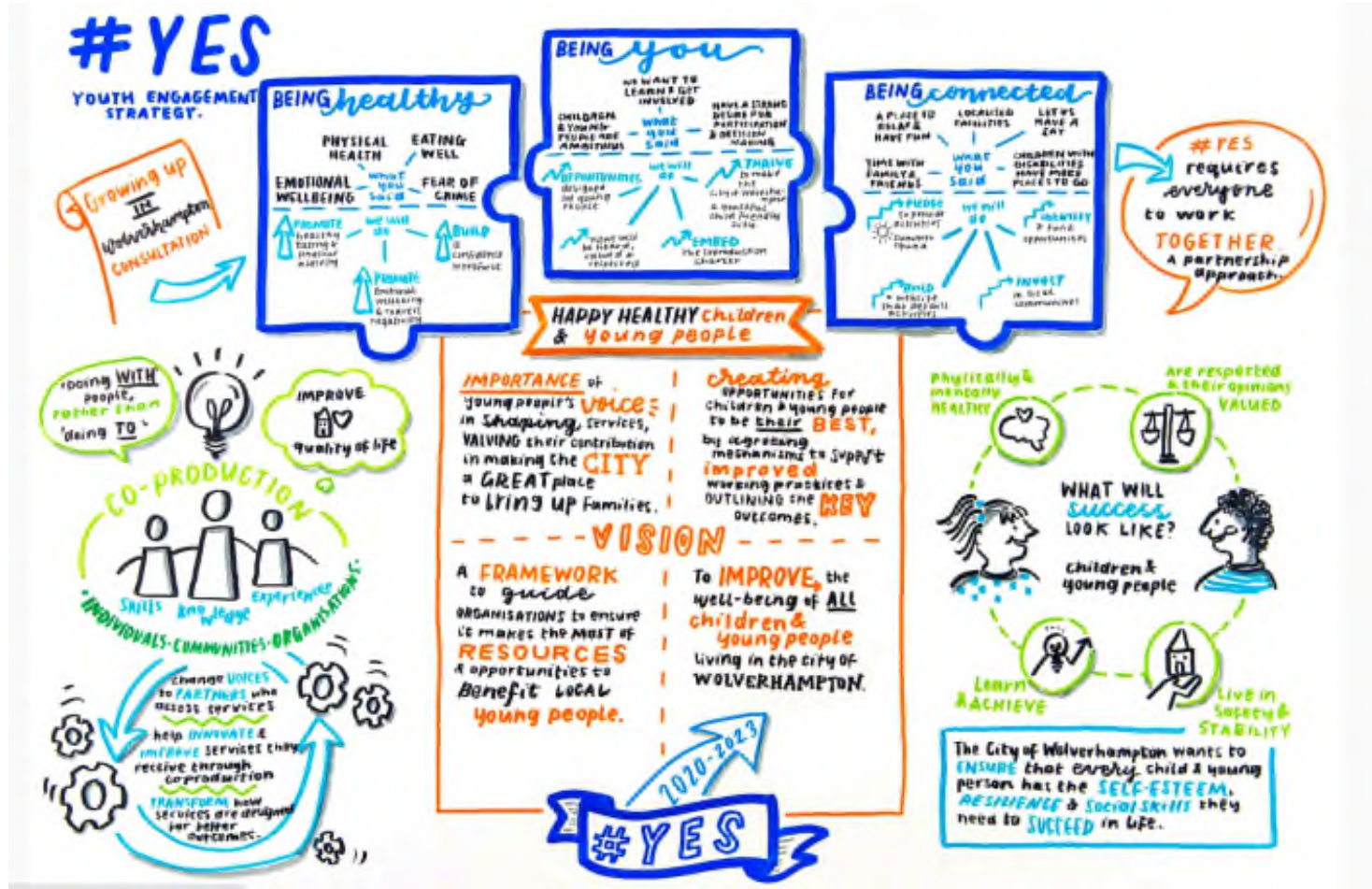
Presenter:

**Andrew Wolverson**

Deputy Director –  
Commissioning &  
Transformation

[wolverhampton.gov.uk](http://wolverhampton.gov.uk)

# #YES (Youth Engagement Strategy)



SELECT DOCUMENT RESTRICTION LEVEL Go to the 'Insert' menu option and click 'Header and Footer...' Select from one of the following options then click 'Apply to All' >> Not Protectively Marked >> PROTECT >> RESTRICTED <<

# Being You – Engagement & Participation

<https://www.youthengagementstrategy.co.uk/being-you.html>

Youth MP's

Youth Council

#YES Board

Care Leavers Independent Collective (CLIC)

Children in Care Council

HY5

Culture & Diversity Group



143 Young People engaged in participation

Life in Lockdown survey

Mental Health Awareness

Anti – Bullying Charter – 2/3 of schools accredited

Make Your Mark – turnout of 10,000

#YES Grants - £500,000 to date

[wolverhampton.gov.uk](http://wolverhampton.gov.uk)

# Deliver a full, fun and exciting programme of activities and opportunities for children and young people over the summer holidays

## Summer 2021

- **21 HAF providers**
- **12,000** HAF places taken up
- **600** activities attend by young people with SEND
- **409** children and parents attended library activities
- Relight Festival had **19 events/shows** for young people and families – **3,090** attended with **1,583** HAF tickets (included in 5,000 figure above)
- Beat the Street Wolverhampton saw **9,600** people cover **61,000 miles** over four weeks between 20 July and 17 August
- Council catering team delivered over **7,500** packed lunches to HAF activities



## Summer 2022

- **46 HAF providers**
- **28,468** HAF activities attended
- **1892** children and parents attended library activities
- **1713** activities attended at WV active Centres
- **551** children attended Strengthening families Hub activities
- Internal caterers delivered **10,225** packed lunches
- **482** children with SEND attended activities

***Over 32,000 activities enjoyed by children, young people and families.***

# Wolverhampton Youth Zone

---

We are a 21st century youth club, based in the centre of Wolverhampton, where 800 children a week will not only find a safe space to bring them off the streets and out of local parks at night, but a world of activities and opportunities that, for too long, have felt closed off to some of Wolverhampton's most deprived families.





# Building the future of the city

Our activities are open to all, and our aim is to raise young people's aspirations, build their confidence, resilience and enabling them to reach their full potential. Our activities focus on improving young peoples physical and emotional health and wellbeing.

- The Way is open throughout the week for all young people, regardless of ability or disability with our sessions split into Juniors (ages 8-12) & Seniors (ages 13-19).
- 60% of our members live in the top 20% of the most deprived areas of the UK.
- A 2020 study by the Department for Work and Pensions indicated that 25% of Wolverhampton's children live in poverty.

# Supporting Uniformed Organisations

On the 27th June 2022 Cllr Momenabadi Cabinet Member for Children and Young People and Andrew Wolverson Deputy Director of Commissioning and Transformation Welcomed member of the newly Launched Youth Organisations Uniformed West Midlands (YOUWM) network to the civics' City Suite.

This meeting was an opportunity to explore the structures the city has in place and how the network and council leaders can build in connectivity and ensure the young people of Wolverhampton are able to access and build confidence.

The group heard about the opportunities of #YES and the YO website, the funding of the Holiday activities and food programme and ideas were shared about how organisations can get involved and the support you would need. The Wolverhampton Volunteer Centre, Peter Emms then explored the challenges of recruiting volunteers and offered support.



**wolverhampton.gov.uk**